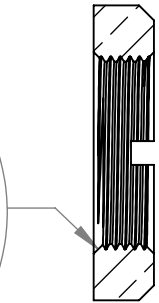
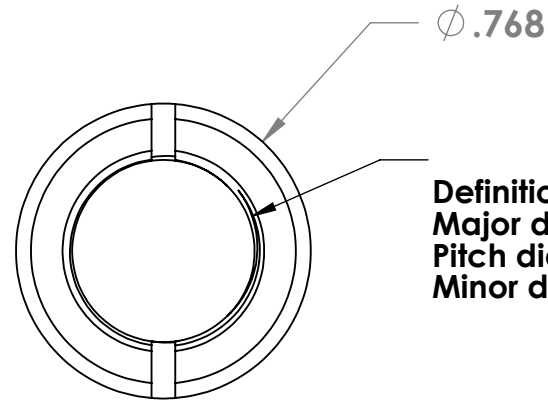
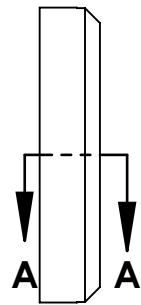
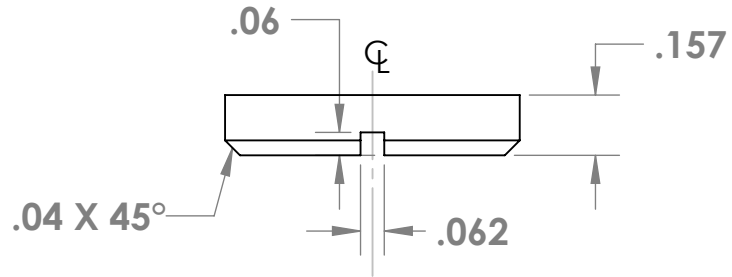




.023 X 45°Chmf TYP
Both sides.No thread
burr or chmf roll
over



SECTION A-A



Definition: (0.5)-40 UNS 3B
Major diameter: 0.507 / 0.500
Pitch diameter: 0.487 / 0.484
Minor diameter: 0.478 / 0.473

Note:

1. **Machined Surfaces**
32rms as machined
2. **Break corners .015" Max**

PROPRIETARY AND CONFIDENTIAL
 THE INFORMATION CONTAINED IN THIS
 DRAWING IS THE SOLE PROPERTY OF
 Hitek Hardware, Inc.
 ANY REPRODUCTION IN PART OR AS
 A WHOLE WITHOUT THE WRITTEN
 PERMISSION OF
 Hitek Hardware, Inc. IS PROHIBITED.

		UNLESS OTHERWISE SPECIFIED:		NAME	DATE			
		DIMENSIONS ARE IN INCHES TOLERANCES: FRACTIONAL ± .015" ANGULAR: MACH ± .5° TWO PLACE DECIMAL ± .010 THREE PLACE DECIMAL ± .005 FOUR PLACE DECIMAL ± .0005		DRAWN		TITLE:		
		INTERPRET GEOMETRIC TOLERANCING PER:		CHECKED		NUT, LOCK, 1/2-40, BRASS		
		MATERIAL 360 Brass		ENG APPR.				
		FINISH		MFG APPR.		SIZE	DWG. NO.	REV
NEXT ASSY	USED ON			Q.A.		A	11584401	1
APPLICATION		DO NOT SCALE DRAWING		COMMENTS:		SCALE: 4:1	WEIGHT:	SHEET 1 OF 1